



INSPIRE
YOURSELF



35

DATEX 3D



LEATHER



DATEX



LACK



35
INSPIRE
YOURSELF

9476 LONG FLARED DRESS

Elegant long dress. It is heavily built-up. It has a collar and long sleeves. Fitted at the waist and then flared down to the bottom. Fastened at the back with a zipper. Combination of knitted fabric and latex gives us almost unlimited production possibilities.

SIZE: S M L XL

Material: Material: DATEX

MATERIAL COMPOSITION: FABRIC (90% POLYESTER, 10% ELASTHANE) + 100% LATEX



9476 LONG FLARED DRESS

Elegant long dress. It is heavily built-up. It has a collar and long sleeves. Fitted at the waist and then flared down to the bottom. Fastened at the back with a zipper. Material used to sewn this dress is datex. It is elastic thus it makes putting on the clothes very easy.

SIZE: S M L XL

Material: Material: DATEX
MATERIAL COMPOSITION: FABRIC (90% POLYESTER,
10% ELASTHANE) + 100% LATEX



9476 LONG FLARED DRESS

Elegant long dress. It is heavily built-up. It has a collar and long sleeves. Fitted at the waist and then flared down to the bottom. Fastened at the back with a zipper. Material used to sewn this dress is datex. It is elastic thus it makes putting on the clothes very easy.

SIZE: S M L XL

Material: Material: DATEX
MATERIAL COMPOSITION: FABRIC (90% POLYESTER,
10% ELASTHANE) + 100% LATEX



9499 FITTED DRESS WITH FLARED BOTTOM

This dress is fitted at the waist and flares out at the bottom. Fastened at the back with a zipper. Made of datex which is flexible and perfectly fits the body. Therefore, the dress stays well on the bust and does not slide off despite the fact that it does not have straps. Additional vertical stitching slims the figure

SIZE: S M L XL

Material: Material: DATEX

MATERIAL COMPOSITION: FABRIC (90% POLYESTER,
10% ELASTHANE) + 100% LATEX



9499 FITTED DRESS WITH FLARED BOTTOM

This dress is fitted at the waist and flares out at the bottom. Fastened at the back with a zipper. Made of datex which is flexible and perfectly fits the body. Therefore, the dress stays well on the bust and does not slide off despite the fact that it does not have straps. Additional vertical stitching slims the figure

SIZE: S M L XL

Material: Material: DATEX

MATERIAL COMPOSITION: FABRIC (90% POLYESTER,
10% ELASTHANE) + 100% LATEX



9464 LONG DRESS WITH TULLE INSERTS

This proposition reveals a little more of the body. The dress has 3 latex panels - on the bust, hips and legs. It is combined with tulle which adds lightness to the pattern. Fastened at back with a zipper. Latex products are very easy to put on and take off.

SIZE: S M L XL

Material: DATEX
MATERIAL COMPOSITION: FABRIC (90% POLYESTER,
10% ELASTHANE) + 100% LATEX



9463 LONG DRESS WITH A FLARED BOTTOM

Very feminine long dress. At the top there is a lace with additional panel on the bust. The type of neckline exposes the shoulders beautifully. It is fastened at the back with a zipper. The dress is close fitting and then widens at the bottom. The material from which it is made is stretchy so wearing comfort will be ensured

SIZE: S M L XL

Material: DATEX

MATERIAL COMPOSITION: FABRIC (90% POLYESTER,
10% ELASTHAN) + 100% LATEX



9477 LONG DRESS WITH FLARED BOTTOM

This dress is fitted at the waist and flares out at the bottom. Fastened at the back with a zipper. Made of datex which is flexible and perfectly fits the body. Therefore, the dress stays well on the bust and does not slide off despite the fact that it does not have straps. The visual asset is visible structure – waves.

SIZE: S M L XL

Material: Material: DATEX
MATERIAL COMPOSITION: FABRIC (90% POLYESTER,
10% ELASTHANE) + 100% LATEX



9513 TRAIN WITH BUCKLE

Do you want to refresh your look without spending huge sums on new clothes? This is the solution for you. Train fastened with a buckle. You can combine it with a skirt, dress or catsuit to create a new fashionable outfit.

SIZE: U

Material: DATEX

MATERIAL COMPOSITION: FABRIC (90% POLYESTER, 10% ELASTHANE) + 100% LATEX



9499 FITTED DRESS WITH FLARED BOTTOM

This dress is fitted at the waist and flares out at the bottom. Fastened at the back with a zipper. Made of datex which is flexible and perfectly fits the body. Therefore, the dress stays well on the bust and does not slide off despite the fact that it does not have straps. Additional vertical stitching slims the figure

SIZE: S M L XL

Material: Material: DATEX
MATERIAL COMPOSITION: FABRIC (90% POLYESTER,
10% ELASTHANE) + 100% LATEX



9478 FITTED DRESS WITH FLARED BOTTOM

The dress is fitted at the waist and then widens at the bottom. There are no straps, but the material from which it is made will make it fit perfectly. Fastened at the back with a zipper. The combination of classic black and vivid pink give it a modern look. At the same time, vertical stripes make the figure look slimmer. You can wear this design to party and delight everybody with your appearance.

SIZE: S M L XL

Material: DATEX

MATERIAL COMPOSITION: FABRIC (90% POLYESTER,
10% ELASTHANE) + 100% LATEX



9481 DRESS WITH COLLAR

Our next proposition is elegant and modern at the same time. The fitted dress has a collar and is fastened at the back with a zipper. Classic knee length. To revive our little black dress it has vertical yellow stripes that make the figure slimmer and add an interesting look to the whole. The combination of natural latex and elastic kitted fabric makes it very easy and pleasant to put on datex clothes .

SIZE: S M L XL XXL

Material: DATEX

MATERIAL COMPOSITION: FABRIC (90% POLYESTER, 10% ELASTHANE) + 100% LATEX



9482 SHORT TOP WITH COLLAR
9483 FITTED SKIRT

The combination of vivid color and black in this design is definitely eye-catching. Fitted top with black collar and vertical black straps is fastened at the back with a zipper.

Skirt is made in the same style. Thanks to the stripes optically slims the figure. It is also fastened with a zipper. The datex material from which these products are made is elastic so your movements will not be restricted.

PRODUCTS ARE SOLD SEPARATELY

SIZE: S M L XL XXL

Material: DATEX

MATERIAL COMPOSITION: FABRIC (90% POLYESTER,
10% ELASTHANE) + 100% LATEX



9484 SHORT TOP WITH OPEN BACK
9485 FITTED MINI SKIRT

Short top made of elastic material beautifully emphasizes the feminine shapes. There are no standard straps, only a neck strap and the back is open.

The mini skirt is fitted. Vertical black stripes on a purple background enliven the whole set. The combination of latex and knitted fabric ensures the comfort of wearing datex clothes.

PRODUCTS ARE SOLD SEPARATELY

SIZE: S M L XL XXL

Material: DATEX

MATERIAL COMPOSITION: FABRIC (90% POLYESTER,
10% ELASTHANE) + 100% LATEX



9494 DRESS WITH PRINTED DATEX INSERT

Fitted black dress fastened at the back with a zipper. At the front there are round neckline and thick straps. To add an interesting and modern look to the dress, a printed datex panel runs along the entire length. It is a combination of tulle and latex pattern. Datex can be sewn, making it possible to combine various patterns and materials.

SIZE: S M L XL

Material: DATEX
MATERIAL COMPOSITION: FABRIC (90% POLYESTER, 10% ELASTHANE) + 100% LATEX

PRINTED DATEX INSERT
MATERIAL COMPOSITION: TULLE (91% POLYAMIDE, 9% LYCRA *) + 100% LATEX



9480 MINI DRESS WITH TULLE INSERT

Skin-tight and very feminine mini dress. Fastened at the back with a zipper. Made of datex material which is elastic and perfectly fits the body. It will emphasize all female shapes. An additional eye-catcher is the tulle insert on the neckline.

SIZE: S M L XL XXL

Material: DATEX

MATERIAL COMPOSITION: FABRIC (90% POLYESTER,
10% ELASTHANE) + 100% LATEX



9493 ASYMMETRICAL DRESS

Thanks to the elasticity of datex material the dress fits perfectly to the figure. Fastened at the back with a zipper. The neckline is built-up. The combination of black and metallic silver adds a unique look. The dress is asymmetrical. One side is shorter and the other side is longer.

SIZE: S M L XL

Material: DATEX
MATERIAL COMPOSITION: FABRIC (90% POLYESTER,
10% ELASTHANE) + 100% LATEX



9489 DRESS WITH ASYMMETRICAL DESIGN

This pattern is definitely eye-catching. The dress has a strap around the neck and is fastened with a zipper. The back is plain black. However, what gives modernity are asymmetrical patterns in different colors at the front. The datex material from which the dress is made is suitable for sewing, so combining different elements is possible and very simple.

SIZE: S M L XL

Material: DATEX
MATERIAL COMPOSITION: FABRIC (90% POLYESTER,
10% ELASTHANE) + 100% LATEX



9490 STRAPLESS DRESS

The perfect proposition for a party. Strapless mini dress fastened at the back with a zipper. At the front there are colorful inserts which will add a modern look. The datex material from which the dress is made can be sewn which gives us almost unlimited production possibilities.

SIZE: S M L XL

Material: DATEX

MATERIAL COMPOSITION: FABRIC (90% POLYESTER,
10% ELASTHANE) + 100% LATEX



DATEX

9491 STRAPLESS DRESS

Elegant strapless dress. Fastened on the side so the zipper is almost invisible. The visual advantage is the combination of black and blue metallic material. The dress is flexible so it fits the figure perfectly and emphasizes feminine shapes.

SIZE: S M L XL

Material: DATEX

MATERIAL COMPOSITION: FABRIC (90% POLYESTER, 10% ELASTHANE) + 100% LATEX



9492 FITTED BODY WITH CUTOUT

For this project structural datex was used. Today's technology allows us to create a material that has a visible structure on it. Thanks to this, our fitted body is extraordinary. Fastened at the back with a zipper. The collar and the cutout on the neckline add character to the whole.

SIZE: S M L XL

Material: DATEX
MATERIAL COMPOSITION: FABRIC (90% POLYESTER,
10% ELASTHANE) + 100% LATEX



9512 APRON WITH BUCKLES

If you want to refresh your wardrobe, we have the perfect proposition for you. Decorative apron fastened using buckles. This product is multi functional. It consists of 2 sections and a belt. Thanks to that we can create many combinations. You can wear it with a dress or pants to create a completely new outfit.

SIZE: U

Material: DATEX
MATERIAL COMPOSITION: FABRIC (90% POLYESTER,
10% ELASTHANE) + 100% LATEX



9486 MINI DRESS WITH ZIPPER

Beautiful dress with heart-shaped neckline and strap around the neck. It is fastened at the back with a zipper. Combination of black and vivid pink makes it very feminine and romantic. It is made of datex material which thanks to its flexibility perfectly fits the figure while providing comfort of wearing.

SIZE: S M L XL XXL

Material: DATEX

MATERIAL COMPOSITION: FABRIC (90% POLYESTER, 10% ELASTHANE) + 100% LATEX



9501 BODY WITH A ZIPPER

Elegant body with long sleeves. Fastened at the back with a zipper. Vertical stitching makes the figure look slimmer. The combination of knitted fabric and latex makes datex clothes easy to put on. They also don't cause excessive sweating. This body can be combined with other products from our collection.

SIZE: S M L XL XXL

Material: DATEX

MATERIAL COMPOSITION: FABRIC (90% POLYESTER, 10% ELASTHANE) + 100% LATEX



9500 TEDDY WITH ZIPPER

Fitted body with short sleeves. Fastened at the back with a zipper. Thanks to the flexibility of datex from which this pattern is made, it perfectly emphasizes all the feminine assets. At the same time, the wearing comfort is ensured.

SIZE: S M L XL XXL

Material: DATEX

MATERIAL COMPOSITION: FABRIC (90% POLYESTER,
10% ELASTHANE) + 100% LATEX



9495 BODY WITH A FRILL

Feminine and sensual body. The V-shaped neckline emphasizes the bust beautifully. Numerous stripes and cutouts will surely capture your partner's imagination. An interesting accent is the frill on the sides and at the back. Body fastened with a zipper. The material from which this pattern is made ensures comfort of wearing.

SIZE: S M L XL

Material: DATEX

MATERIAL COMPOSITION: FABRIC (90% POLYESTER,
10% ELASTHANE) + 100% LATEX



9510 BRA WITH LACE INSERT
9511 BRIEFS WITH LACE INSERT

This bra looks almost like a top. Neck strap fastened at the back. It has lace insert on the neckline.

Briefs are kept in the same style. They have lace inserts on the sides. The material used to sewn this design is datex. It makes you feel comfortable and ensures high quality.

PRODUCTS ARE SOLD SEPARATELY OR AS A SET 9465

SIZE: S M L XL

Material: DATEX
MATERIAL COMPOSITION: FABRIC (90% POLYESTER,
10% ELASTHANE) + 100% LATEX



9479 MINI DRESS WITH TUCK

Sensual mini dress. The cutout in the neckline fantastically emphasizes the bust. Dress fastened with a zipper. The back is open. An additional element that adds character is a tuck at the front and a belt tied at the waist.

SIZE: S M L

Material: DATEX

MATERIAL COMPOSITION: FABRIC (90% POLYESTER,
10% ELASTHANE) + 100% LATEX



9497 ASYMMETRICAL DRESS

The combination of classic black and metallic green in this design is an immediate eye-catcher. Collar and cutout on the neckline expose the bust. The dress is fastened at the back with a zipper. Asymmetry adds the character to the whole. The panels on the front have different shapes and the dress is longer on one side. It is an ideal proposition for a party, not only the fetish one.

SIZE: S M L

Material: DATEX
MATERIAL COMPOSITION: FABRIC (90% POLYESTER,
10% ELASTHANE) + 100% LATEX



2328 STRAPLESS DRESS

Long dress made of stretchy material. There is no fastening but the elasticity of the material makes it very easy to put on. Red pattern on black lycra adds character to the design. Thanks to the latex stripe in the upper part of the dress it stays in place and does not fall off. The dress can be combined with other products.

SIZE: S M L XL

Material: PRINTED DATEX 3D
MATERIAL COMPOSITION: TULLE
(91 % POLYAMIDE, 9% LYCRA) + 100% LATEX



2361 STRIPPED COLLAR

If you want to refresh your look, we have a perfect solution. This collar made of printed datex will turn your old clothes into new fantastic outfits. The material is stretchy thus it is very easy to put the collar on.

SIZE: U

Material: PRINTED DATEX 3D
MATERIAL COMPOSITION: TULLE (91% POLYAMIDE, 9% LYCRA *)
+ 100% LATEX



2336 FITTED DRESS WITHOUT SLEEVES

Printed datex dress with twirling latex pattern printed on black tulle. There is no fastening, yet it is easy to put on or take off the dress. The material is very flexible and fits the figure perfectly.

SIZE: S M L XL

Material: PRINTED DATEX 3D
MATERIAL COMPOSITION: TULLE (91% POLYAMIDE, 9% LYCRA *)
+ 100% LATEX



2333 LONG FITTED DRESS

Perfectly fitting to the body dress made of printed datex. It will emphasize all the assets of a female figure and it is permeable. An additional advantage is the stretch that will ensure comfort.

SIZE: S M L XL

Material: PRINTED DATEX 3D
MATERIAL COMPOSITION: TULLE (91% POLYAMIDE, 9% LYCRA *)
+ 100% LATEX



2334 LONG FITTED DRESS

See-through dress with an irregular latex pattern. Despite the fact that the dress is tight, it is comfortable and fantastically frame feminine shapes. Fastened at the back with a zipper. The combination of latex and tulle makes this pattern eye-catching.

SIZE: S M L XL

Material: PRINTED DATEX 3D
MATERIAL COMPOSITION: TULLE
(91% POLYAMIDE, 9% LYCRA *)+ 100% LATEX



2329 SLEEVELESS MINI DRESS

A tulle dress with vertical latex stripes. There is no fastening but thanks to the flexibility of the material it is made of, it is very easy to put on. It fits the figure beautifully. The V-shaped cutout on the back adds elegance.

SIZE: S M L XL

Material: PRINTED DATEX 3D
MATERIAL COMPOSITION: TULLE (91% POLYAMIDE, 9% LYCRA *)
+ 100% LATEX



2330 MINI DRESS WITH ZIPPER

Printed datex dress with irregular yellow latex pattern on black tulle. The dress is smooth at the back and it has only a zipper which is surrounded by latex. The advantage of this material is high permeability. The dress is see through so it will definitely stimulate your partner's senses.

SIZE: S M L XL

Material: PRINTED DATEX 3D
MATERIAL COMPOSITION: TULLE (91% POLYAMIDE, 9% LYCRA *)
+ 100% LATEX



2335 MINI DRESS WITH ZIPPER

Sleeveless dress with spatial design. There is no pattern at the back only a zipper. The material from which the dress is made ensures comfort and is breathable – it doesn't cause sweating. This dress will surely add some spice to your relationship.

SIZE: S M L XL

Material: PRINTED DATEX 3D
MATERIAL COMPOSITION: TULLE (91% POLYAMIDE, 9% LYCRA *)
+ 100% LATEX



2332 SKIN-TIGHT BODYSUIT

Highly elastic bodysuit with the pattern. It is fastened at the back with a zipper. Printed datex material provides freedom in putting on tight-fitting clothes. It is see through so it will definitely stimulate your partner's senses.

SIZE: S M L XL

Material: PRINTED DATEX 3D
MATERIAL COMPOSITION: TULLE (91% POLYAMIDE, 9% LYCRA ®)
+ 100% LATEX



2331 SKIN-TIGHT BODYSUIT

Highly elastic bodysuit with the pattern. It is fastened at the back with the zipper. Printed datex material provides freedom in putting on tight-fitting clothes. Almost unlimited possibilities in creating latex patterns make our creations unique.

SIZE: S M L XL

Material: PRINTED DATEX 3D
MATERIAL COMPOSITION: TULLE (91% POLYAMIDE, 9% LYCRA *)
+ 100% LATEX



**2359 CROP TOP WITH HALTERNECK
STRAP**
2360 FLARED SKIRT

This amazing set is made from very innovative material called printed datex. The beautiful strap motif which can be seen is a latex pattern apply to the very extensible fabric. Thanks to this method what is created is 3D effect. Both top and skirt fit snugly and ensuring the comfort of wearing at the same time. The whole is very sexy and feminine.

PRODUCTS ARE SOLD SEPARATELY OR AS A SET 2316

SIZE: S M L XL

Material: PRINTED DATEX 3D
MATERIAL COMPOSITION: TULLE
(91% POLYAMIDE, 9% LYCRA *) + 100% LATEX



2976 MINI DRESS WITH DECORATIVE NECKLINE

Feminine dress made of an innovative material called printed latex. This design has a spacious pattern and highlights the feminine curves beautifully. An eye-catching detail is a metal ring and stripes on the neckline. The dress is breathable which ensures wearing comfort.

SIZE: S M L

Material: PRINTED LATEX 3D
MATERIAL COMPOSITION: 100% LATEX



2911 BODY WITH SPATIAL DESIGN

Sensual body with round neckline. This innovative material is latex pattern lined without using any other fabric. This method allow us to create 3D designs. Body is very elastic and does not cause a vacuum effect as in the case of standard latex clothing.

SIZE: S M L

Material: PRINTED LATEX 3D
MATERIAL COMPOSITION: 100% LATEX



1174 SLEEVELESS CATSUIT

It has thick straps and round neckline which show off the bust beautifully. The surprise here is that the zipper runs from the top through the crotch and ends at the back. Stitching on the front and fitted long legs emphasize the figure. The great advantage of the material from which this catsuit is made is the fact that it is shiny without using any special polishing preparations.

SIZE: S M L XL XXL

Material: LACK
MATERIAL COMPOSITION: 36% POLYURETHANE,
56% POLYAMIDE, 8% ELASTHAN



LACK

1726 CATSUIT WITH CUTOUTS

Long legs skin-tight catsuit. It has cutouts on the chest which makes it very sensual. Fastened at the back with a zipper. It also has an open crotch. The material from which this product is made makes it comfortable and fit the body perfectly.

SIZE: S M L XL XXL

Material: LACK

MATERIAL COMPOSITION: 36% POLYURETHANE,
56% POLYAMIDE, 8% ELASTHAN



LACK

1202 BLOUSE WITH COLLAR
1203 ASYMMETRICAL SKIRT

This feminine blouse is made from lack. It has 2 straps with buckles at the front and a black zipper at the back. Beautifully cut neckline exposes the chest. The cups are padded. There is also a buckle on the collar. The back is built-up.

The skirt is very fashionable. The cut makes it asymmetrical – shorter at the front and longer at the back and sides. Fastened at the back with zipper. The mixture of red and black colors harmonizes fantastically with each other. The belt at the waist adds elegance.

PRODUCTS ARE SOLD SEPARATELY

SIZE: S M L XL XXL

Material: LACK

MATERIAL COMPOSITION: 36% POLYURETHANE,
56% POLYAMIDE, 8% ELASTHAN



1636 SLEEVELESS BLOUSE
1637 OVER THE KNEE SKIRT

The cut of this blouse resembles a vest. There are no sleeves. It is fastened at the front with a zipper. The blouse is made of lack, thanks to which it is shiny without using any polishing preparations. Red piping is a beautiful addition.

The skirt is very classic. It is fastened at the back with the zipper – fastening direction is from top to the bottom. That means that we can use zipper to make a split in the skirt. There are also red inserts on the sides which makes it wonderfully combined with blouse.

PRODUCTS ARE SOLD SEPARATELY

SIZE: S M L XL XXL

Material: LACK

MATERIAL COMPOSITION: 36% POLYURETHANE,
56% POLYAMIDE, 8% ELASTHAN



1461 MINI DRESS WITH HIGH NECKLINE

This proposition has a high neckline and the strap around the neck. The back is open. The dress is fastened at the front with a zipper. Such design emphasize feminine shapes and perfectly fits the body.

SIZE: S M L XL XXL

MATERIAL COMPOSITION: 36% POLYURETHANE,
56% POLYAMIDE, 8% ELASTHAN



1260 BLACK TIGHT DRESS 1033 LONG GLOVES

Something that every woman must have in her wardrobe a tight fitting black dress. V-neckline fantastically exposes the chest. The dress has a lacing on the back thanks to which it is more stylish.

Long gloves are the perfect accessory and add an elegance. They are fastened with a zipper. The advantage is that those designs are made from lack material which is very easy to put on and is shiny without using any polish preparations.

PRODUCTS ARE SOLD SEPARATELY

SIZE: S M L XL XXL

Material: LACK

MATERIAL COMPOSITION: 36% POLYURETHANE,
56% POLYAMIDE, 8% ELASTHAN



1277 MINI DRESS WITH TULLE INSERT

Tight dress made of a shiny lack. Fastened at the back with a zipper and the collar is fastened with press studs. To add seductive touch the dress has a tulle insert on the neckline. It has an open back. The material adapts fantastically to the body and the stitching at the front and back additionally slims the figure. In this dress you will feel good and sexy.

SIZE: S M L XL XXL

Material: LACK

MATERIAL COMPOSITION: 36% POLYURETHANE,
56% POLYAMIDE, 8% ELASTHAN



1460 CLASSIC MINI DRESS

Simple, elegant mini dress for every occasion. Thanks to the thicker straps and the boat neck it beautifully emphasizes the shoulders and the bust. This length is making your legs look longer. Elastic material will ensure comfort, your movements will not be restricted and you will feel feminine. The dress is fastened at the back with a zipper.

SIZE: S M L XL XXL

MATERIAL: LACK

MATERIAL COMPOSITION: 36% POLYURETHANE,
56% POLYAMIDE, 8% ELASTHAN



1099 MINI DRESS

Fitted mini dress with heart-shaped neckline. Beautifully exposes the chest. Additional stitching makes it fit perfectly and adhere to the body. This design is feminine, classic and elegant. It is fastened at the back with a zipper. You can definitely wear it to the party and all eyes will be on you.

SIZE: S M L XL XXL

Material: LACK

MATERIAL COMPOSITION: 36% POLYURETHANE,
56% POLYAMIDE, 8% ELASTHAN



LACK

1736 MINI DRESS WITH LACING

Sensual and feminine dress with padded cups. Heart-shaped neckline and thin straps accentuate the bust and shoulders. A visual detail is lacing at the front of the dress. It is fastened at the back with a zipper. This cut fantastically emphasizes all the feminine assets.

SIZE: S M L

Material: LACK

MATERIAL COMPOSITION: 36% POLYURETHANE,
56% POLYAMIDE, 8% ELASTHAN



1138 CROP TOP WITH COLLAR
1261 SHORTS WITH BELT LOOPS

This fashionable top is fastened at the front with a zipper. It has a collar and is less built-up at the back.

Shorts are the ideal addition. It has belt loops and is fastened with a zipper and a button. The stitching on the buttocks makes the pants fit beautifully to the figure. The advantage of the material from which this products are made is its flexibility thanks to which it emphasizes perfectly all the curves and provides comfort of wearing.

PRODUCTS ARE SOLD SEPARATELY

SIZE: S M L XL XXL

Material: LACK

MATERIAL COMPOSITION: 36% POLYURETHANE,
56% POLYAMIDE, 8% ELASTHAN



1198 TEDDY WITH CUTOUTS

This design definitely has a little bit of spice. A halter collar and the front panel is cut under the bust. Additionally it has an open crotch. Thanks to the vertical stitching it fits tight around the body. Because the material is stretchy the comfort of wearing is guaranteed.

SIZE: S M L XL XXL

Material: LACK

MATERIAL COMPOSITION: 36% POLYURETHANE,
56% POLYAMIDE, 8% ELASTHAN



LACK

1631 CORSET WITH LACING 1651 LOW CUT THONG

Elegant corset with padded cups. It combines 2 colors at the front – red and black – which makes it look elegant and sexy. The lacing on the sides is a very beautiful detail. It is fastened at the back with a zipper. Also the back is single colored – red. Elastic straps to which you can attach stockings are adjustable. The cut of the corset makes it perfectly emphasize the feminine shapes.

The low cut thong is very classic and have adjustable straps on the hips.

PRODUCTS ARE SOLD SEPARATELY

SIZE: S M L XL XXL

Material: LACK

MATERIAL COMPOSITION: 36% POLYURETHANE,
56% POLYAMIDE, 8% ELASTHAN



1172 BODY WITH SHOULDER PADS

This bodysuit combines classic with modernity. Stiffened cups have a black zippers. An interesting accent is the shoulder pads. The whole is fastened at the front with the zipper. The crotch is open and at the back there are thong. In such design you will surely stimulate your partner's imagination.

SIZE: S M L XL XXL

Material: LACK

MATERIAL COMPOSITION: 36% POLYURETHANE,
56% POLYAMIDE, 8% ELASTHAN



LACK

1630 CORSET WITH LACING 1265 CLASSIC THONG

This beautiful timeless corset has a strap around the neck and open back. It is fastened with a zipper. The lacing at the front adds the effective look and elegance. Combination of red and black is eye-catching. The cups have underwires so that the breasts look alluring. Additionally elastic straps with clips are adjustable.

Classic thong from lack ideally form a whole with the corset.

PRODUCTS ARE SOLD SEPARATELY

SIZE: S M L XL XXL

Material: LACK

MATERIAL COMPOSITION: 36% POLYURETHANE, 56% POLYAMIDE, 8% ELASTHAN



1728 CORSET WITH A COLLAR
1265 CLASSIC THONG

This corset is fastened with a zipper. Additionally it has a lacing at the back which allows it to fit better to the body and emphasize your waist. Beautiful neckline with the collar can be deepened using the zipper. This design will help you to surprise your partner at the bedroom but you can also wear it to the party and rock it.

Plain, black thong is a classic that every woman should possess. They are made of lack therefore the comfort of wearing is provided.

PRODUCTS ARE SOLD SEPARATELY

SIZE: S M L XL XXL

Material: LACK

MATERIAL COMPOSITION: 36% POLYURETHANE,
56% POLYAMIDE, 8% ELASTHAN



1533 TOP WITH LACING
1534 SUSPENDER BELT WITH LACING
1628 THONG WITH ELASTIC STRAPS

The fantastic combination of red and black colors makes this set very classic and sexy. The cut of this top resembles a short corset. Cups have underwires. Lacing at the front and zipper at the back allows you to adjust the top perfectly and emphasize the figure.

The situation is similar with the suspender belt, here we also have a lacing and a zipper. Additionally the straps with clips can be adjusted.

Classic thongs with elastic straps perfectly match the whole.

PRODUCTS ARE SOLD SEPARATELY

SIZE: S M L XL XXL

Material: LACK
MATERIAL COMPOSITION: 36% POLYURETHANE,
56% POLYAMIDE, 8% ELASTHAN



1635 BODY WITH CUTOUTS

Close-fitting, shiny body. It has round cutouts on the breasts. It is fastened at the front with a zipper. It has an open crotch. Additional stitching at the front and at the back slender the figure. The body has red piping which adds the character to the design.

SIZE: S M L XL XXL

Material: LACK

MATERIAL COMPOSITION: 36% POLYURETHANE,
56% POLYAMIDE, 8% ELASTHAN



1754 BRA WITH UNDERWIRES
1265 HIGH WAISTED THONG

This bra has full cups and underwires thanks to which it supports the breasts well. It is fastened at the back with buckle and eyelets. The shoulder straps are also adjustable. All the metal parts are produce in anti-nickel coating which make them safe. This pattern will be every woman's favorite.

These classic high-waisted thong are finished with a decorative elastic.

PRODUCTS ARE SOLD SEPARATELY

SIZE: S M L XL XXL

Material: LACK

MATERIAL COMPOSITION: 36% POLYURETHANE,
56% POLYAMIDE, 8% ELASTHAN



1755 BRA WITH UNDERWIRES
1265 HIGH-WAISTED THONG

This bra design also has underwires that provide good support for the breasts. It is fastened at the back with a metal clasp. It has a halterneck instead of a standard straps. The cups are finished with the decorative elastic.

Classic high-waisted thong matches the bra perfectly because they are finished also with decorative elastic. Combine it with other products from our offer and enjoy your amazing look.

PRODUCTS ARE SOLD SEPARATELY

SIZE: S M L XL XXL

Material: LACK

MATERIAL COMPOSITION: 36% POLYURETHANE,
56% POLYAMIDE, 8% ELASTHAN



LACK

5611 BRA WITH UNDERWIRE
5812 JACKET WITH ZIPPER
5856 SKIRT WITH LYCRA INSERT

Leather jacket with three-quarters sleeve. It is fastened at the front with a zipper. Vertical stitching slims the figure and makes the jacket fit perfectly.

The underwired bra supports and enhances the breasts. Fastened at the back with a buckle. Strap around the neck also has buckles and eyelets thus it can be adjusted.

Leather tight skirt emphasizes feminine shapes. At the back it is made from Lycra material which makes it very comfortable. Leather pockets and red stitching are an interesting addition.

PRODUCTS ARE SOLD SEPARATELY

BRA SIZE: S M L XL XXL

JACKET SIZE: S M L XL

SKIRT SIZE: S M L XL

Material: SOFT COWHIDE LEATHER NAPPA



0888 SLEEVELESS BLOUSE
0889 SKIN-TIGHT SKIRT

Leather sleeveless blouse that resembles a vest. Metal clasps – hook and eye - add an effective look. The belt with the buckle at the back allows to adjust the blouse and emphasize the waist. This design also have a collar that is fastened with a hook and eye. All of that make the design dashing.

Classic black skirt is a must have for every woman. It is fastened at the back with the zipper. Vertical stitching adds elegance and slims the figure. Freedom of movement is provided by a small split at the bottom of the skirt.

PRODUCTS ARE SOLD SEPARATELY

BLOUSE SIZE: S M L XL XXL
SKIRT SIZE: S M L

Material: SOFT COWHIDE LEATHER NAPPA



LEATHER

5113 CLOSE-FITTING DRESS

Elegant and classic leather dress with heart-shaped neckline and strap around the neck. It has Lycra inserts at the back thanks to which it fits well and adapts to the body. Fastened with the black zipper. It is good outfit for the party and not only the fetish one.

SIZE: S M L

Material: SOFT COWHIDE LEATHER NAPPA



LEATHER

5124 MINI DRESS WITH LACING

A classic design that every woman should have in her wardrobe. Black sleeveless dress. Fastened at back with a zipper. There is also a lycra insert at the back which makes the dress perfectly fit the body. An eye-catching detail is the lacing which runs from the neckline to the bottom of the dress.

SIZE: S M L XL

Material: SOFT COWHIDE LEATHER NAPPA



0285 STRAPLESS DRESS

Perfect proposition for a party and not only the fetish one. A leather strapless dress with stitching at the front that beautifully shapes the figure. It has Lycra inserts on the sides thanks to which it fits well and adapts to the body. Fastened at the back with black zipper.

SIZE: S M L XL

Material: SOFT COWHIDE LEATHER NAPPA



5576 FLARED MINI DRESS

Very feminine mini dress. The neckline has a heart shape. There is an adjustable neck strap and open back. The dress is fastened with a zipper. Fastening direction is from top to bottom. The three belts with buckles at the waist add an interesting look.

SIZE: S M L XL

Material: SOFT COWHIDE LEATHER NAPPA



5452 FLARED MINI DRESS

If you want to seduce your partner in bedroom this is the ideal proposition for you. Leather dress exposing the bust. The neckline starts just under the breasts. The dress has three stripes at the waist so that it can be perfectly adapted to the figure. The shoulder straps are also adjustable. At the back there is a zipper fastened from the top to bottom.

SIZE: S M L XL XXL

Material: SOFT COWHIDE LEATHER NAPPA



0265 TOP WITH LACING
5532 SKIRT WITH LACING

Very soft cowhide leather. Special attention in this type of clothes should be paid to the pleasant touch and comfort. Leather top is enriched with the lacing at the front which adds character to the design. The strap around neck has buckles and metal enforced holes in anti-nickel coating which make it adjustable. The top has an elegant stitching on the cups.

Leather flared mini skirt is very feminine. It has lacing on the side thanks to which it goes perfectly with the top.

PRODUCTS ARE SOLD SEPARATELY.

TOP SIZE: S M L XL XXL

SKIRT SIZE: S M L

Material: SOFT COWHIDE LEATHER NAPPA



5609 BRA WITH UNDERWIRES
0276 MINI SKIRT

Elegant leather bra, the shape of which resembles shells. It has underwires so that it supports the bust beautifully. The neck strap is adjustable. It is fastened at the back with a buckle and eyelets. It can be worn alone or combined with other clothing.

The mini skirt has a pleat at the front and is fastened with two straps with buckles. The cut makes it light and feminine.

PRODUCTS ARE SOLD SEPARATELY

SIZE: S M L XL XXL

Material: SOFT COWHIDE LEATHER NAPPA



0869 TOP WITH METAL CLASPS
5101 MINI SKIR WITH METAL CLASPS
5266 SHORT FINGERLESS GLOVES

A striking detail in this top are 3 leather straps fastened with a buckle at the front. On the back there is an insert made of elastic material thanks to which the top will perfectly fit the figure.

The skirt is in the same style. Straps with buckles on the sides add character. It is fastened with a zipper at the back.

Short fingerless gloves will make a fantastic addition to any outfit.

All the metal parts are safe because they are produce in anti-nickel coating.

PRODUCTS ARE SOLD SEPARATELY

SIZE: S M L XL XXL

Material: SOFT COWHIDE LEATHER NAPPA



LEATHER

0267 BRA WITH HALTERNECK STRAP
5266 GLOVES WITH ZIPPER
6175 MINI SKIRT

A fantastically emphasizing bust leather bra which looks almost like a top. It is fuller than normal bra. Fastened at the back with a buckle. The strap around the neck is adjustable.

Close-fitting leather skirt is fastened with the zipper on the side. Stitching on the front makes the silhouette look slimmer.

A great addition with character are short leather gloves with a zipper.

PRODUCTS ARE SOLD SEPARATELY

SIZE: S M L XL XXL

SKIRT SIZE: S M L

Material: SOFT COWHIDE LEATHER NAPPA



0267 BRA WITH HALTERNECK STRAP
5855 SKIRT WITH LYCRA INSERT

A fantastically emphasizing bust leather bra which looks almost like a top. It is fuller than normal bra. Fastened at the back with a buckle which is nickel free. The strap around the neck is adjustable.

Leather tight skirt emphasizes feminine shapes. At the back it is made from Lycra material which makes it very comfortable. Leather pockets and red stitching are an interesting addition.

PRODUCTS ARE SOLD SEPARATELY.

BRA SIZE: S M L XL XXL

SKIRT SIZE: S M L XL

Material: SOFT COWHIDE LEATHER NAPPA



5337 BODY WITH CUTOUTS

Close-fitting leather body. It has round cutouts on the breasts. It is fastened at the front with a zipper. It has an open crotch. Additional stitching at the front and at the back slender the figure. The body has red piping which adds the character to the design.

SIZE: S M L XL XXL

Material: SOFT COWHIDE LEATHER NAPPA



5331 BODY WITH ELASTIC STRAPS

This body is made of soft cowhide leather, thanks to which the wearing comfort is ensured. Fastened at the back with a zipper. Elastic stripes at the front add an interesting look. The crotch in this design is open.

SIZE: S M L

Material: SOFT COWHIDE LEATHER NAPPA



5264 CORSET WITH LACING
5612 CLASSIC THONG

The corset with a heart-shaped neckline beautifully exposes the chest and shoulders. Fastened with metal clasps at the front and lacing at the back. Thanks to this, it will perfectly fit your figure and emphasize your waist. The combination of black and red adds elegance.

Classic thong with elastic straps at the hips ideally form a whole with corset.

PRODUCTS ARE SOLD SEPARATELY

SIZE: S M L XL XXL

Material: SOFT COWHIDE LEATHER NAPPA



5425 CORSET WITH ZIPPER
5446 BRIEFS WITH ZIPPER

Beautiful leather corset. The front has a zipper which make it easy to put it on. In addition, there is a lacing at the back, thanks to which you will emphasize your waist and adjust the corset perfectly.

The briefs have adjustable straps on the hips. Very interesting fact is that the zipper here is double.

PRODUCTS ARE SOLD SEPARATELY

CORSET SIZE: S M L

BRIEFS SIZE: S M L XL XXL

Material: SOFT COWHIDE LEATHER NAPPA



LEATHER

5254 CORSET WITH ZIPPER
5252 CLASSIC THONG

Classic leather corset. Fastened at the front with a zipper. It has lacing on the back for a better fit. Heart-shaped neckline accentuates the chest. The corset has a collar that adds character. The red trimming that match the zipper is also a beautiful addition.

Low cut thong is the foundation that every woman should have. Made of soft cowhide leather which ensure comfort of wearing.

PRODUCTS ARE SOLD SEPARATELY

SIZE: S M L XL XXL

Material: SOFT COWHIDE LEATHER NAPPA



5560 CORSET WITH A ZIPPER
5044 CLASSIC THONG

A timeless leather corset is something that every woman should have. The heart-shaped neckline beautifully accentuates the chest and shoulders. Fastened at the front with a zipper for easy donning. In addition, there is lacing at the back so you can adjust the corset perfectly to your figure.

Classic thongs have elastic straps on the hips.

PRODUCTS ARE SOLD SEPARATELY

CORSET SIZE: S M L

THONG SIZE: S M L XL XXL

Material: SOFT COWHIDE LEATHER NAPPA



LEATHER

5710 CORSET WITH ZIPPER
5252 LOW-CUT THONG

Elegant red corset without straps. The heart-shaped neckline beautifully accentuates the shoulders and chest. Fastened at the front with a zipper. In addition there is lacing at the back, thanks to which a precise fit to the figure is possible.

Low cut thong is the foundation that every woman should have. Made of soft cowhide leather which ensure comfort of wearing.

PRODUCTS ARE SOLD SEPARATELY

SIZE: S M L XL XXL

Material: SOFT COWHIDE LEATHER NAPPA



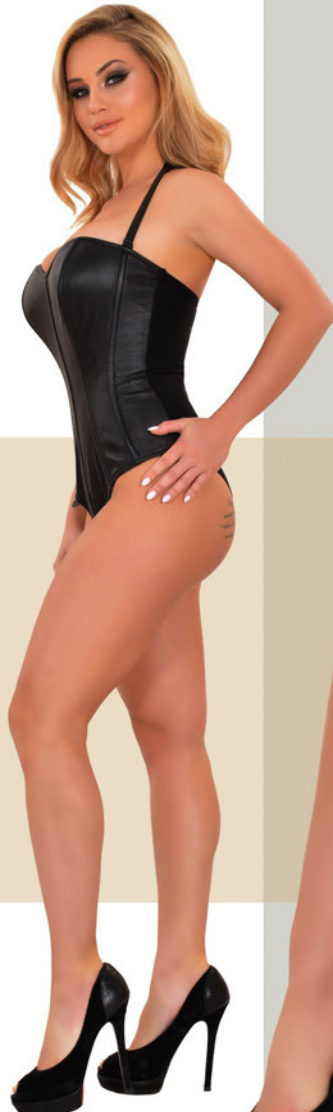
LEATHER

5669 BODY WITH LYCRA ADDITION

This beautiful classic body has a heart-shaped neckline. Vertical stitching makes the figure look slimmer. The crotch is open. At the back there is Lycra insert, thanks to which the body will fit your figure even better. Fastened with an almost invisible black zipper. In this design you will definitely feel sexy.

SIZE: S M L XL XXL

Material: SOFT COWHIDE LEATHER NAPPA



5573 HALF-CUP BRA
5448 SUSPENDER BELT WITH ZIPPER
5446 BRIEFS WITH ZIPPER

A bra doesn't have to be boring. This proposition has a collar and half-cups that fantastically lift and support the breasts. Leather stripes on the neckline are a visual addition.

The suspender belt has a zipper at the front making it easier to put it on and an additional lacing at the back for a better fit.

The briefs fits perfectly to the whole. There is also a zipper which is double.

PRODUCTS ARE SOLD SEPARATELY

SIZE: S M L XL XXL

Material: SOFT COWHIDE LEATHER NAPPA



5823 BRA WITH HALF CUPS
5822 SUSPENDER BELT WITH ZIPPER
5044 CLASSIC THONG

Leather half-cup bra with underwires. It is fastened at the back with a buckle. This type of bra fantastically supports and lifts the breast.

This suspender belt is quite high. It is fastened at the front with the zipper. At the back there is lacing thanks to which you will adjust this belt perfectly to your silhouette. Vertical stitching slims the figure even more.

Classic and minimalist thong. They are made from soft cowhide leather so the comfort of wearing is ensured.

PRODUCTS ARE SOLD SEPARATELY

BRA SIZE: S M L

SUSPENDER BELT SIZE: S M L XL XXL

THONG SIZE: S M L XL XXL

Material: SOFT COWHIDE LEATHER NAPPA



0981 BIKINI SET**0771 CLASSIC SUSPENDER BELT**

Delicate leather bikini set. Triangle-shaped cups with an elastic band around the neck and under the bust, and classic thong.

Suspender belt goes perfectly with the bikini. It is fastened at the back with a zipper. It also has draping at the back thanks to which is more stretchy and fits better. Elastic straps with clips are adjustable. Vertical stitching adds style.

PRODUCTS ARE SOLD SEPARATELY

SIZE: S M L XL XXL

Material: SOFT COWHIDE LEATHER NAPPA



5609 BRA WITH UNDERWIRES
5610 THONG WITH CUTOUTS

Elegant leather bra, the shape of which resembles shells. It has underwires so that it supports the bust beautifully. The neck strap is adjustable. It is fastened at the back with a buckle and eyelets. It can be worn alone or combined with other clothing.

The thong has an elastic straps at the hips which of course are adjustable. Half-round cutouts at the front and the stitching make it perfect match for the bra.

Both products are made from soft leather thus the comfort of wearing is ensured.

PRODUCTS ARE SOLD SEPARATELY

SIZE: S M L XL XXL

Material: SOFT COWHIDE LEATHER NAPPA



0475 HALF-CUP BRA
0874 THONG WITH BUCKLES
0978 LONG GLOVES

Leather half-cup bra with underwires. It is fastened at the back with a buckle. The shoulder straps can be adjusted with a buckle and metal eyelets in anti-nickel coating. This type of bra fantastically supports and lifts the breast.

Very simple and always fashionable design of leather thong with adjustable straps on the hips.

Long finger-less gloves with Lycra inserts are very comfortable and will add the character to every outfit.

PRODUCTS ARE SOLD SEPARATELY

BRA SIZE: S M L
THONG SIZE: S M L XL XXL
GLOVES SIZE: S M L XL XXL

Material: SOFT COWHIDE LEATHER NAPPA



6200 TEDDY WITH LACE INSERT

Close-fitting body with collar. It has closed back and is fastened with zipper. Beautiful V-shaped neckline has a lace insert. The material used to create this design is eco-leather. It is pleasant in touch and very easy to use.

SIZE: S M L

Material: ECO LEATHER

MATERIAL COMPOSITION: 50% POLYURETHANE,
50% POLYESTER



ECO-LEATHER

6198 LONG DRESS WITH LACE

Elegant long dress made of eco-leather. It has lace sleeves. A deep V-shaped neckline and opening at the front add a sexy look. The dress at the bottom is made of lace, which gives it lightness. It is fastened at the back with a zipper.

SIZE: S M L

Material: ECO LEATHER
MATERIAL COMPOSITION: 50% POLYURETHANE,
50% POLYESTER



ECO-LEATHER

6222 LONG DRESS WITH LACE

Long, tight dress. The top is made of lace with an additional panel on the bust. It is fastened at the back with a zipper. The bottom is straight with vertical stitching at the front that slims the figure.

SIZE: S M L

Material: ECO LEATHER

MATERIAL COMPOSITION: 50% POLYURETHANE,
50% POLYESTER



3024 BODY WITH CUTOUTS 3025 LONG STOCKINGS

A very feminine and delicate pattern. This body has cutouts on the chest. It is fastened at the back with an almost invisible zipper. There is an open crotch. Made of Lycra material that is very mellow and fits perfectly to the body.

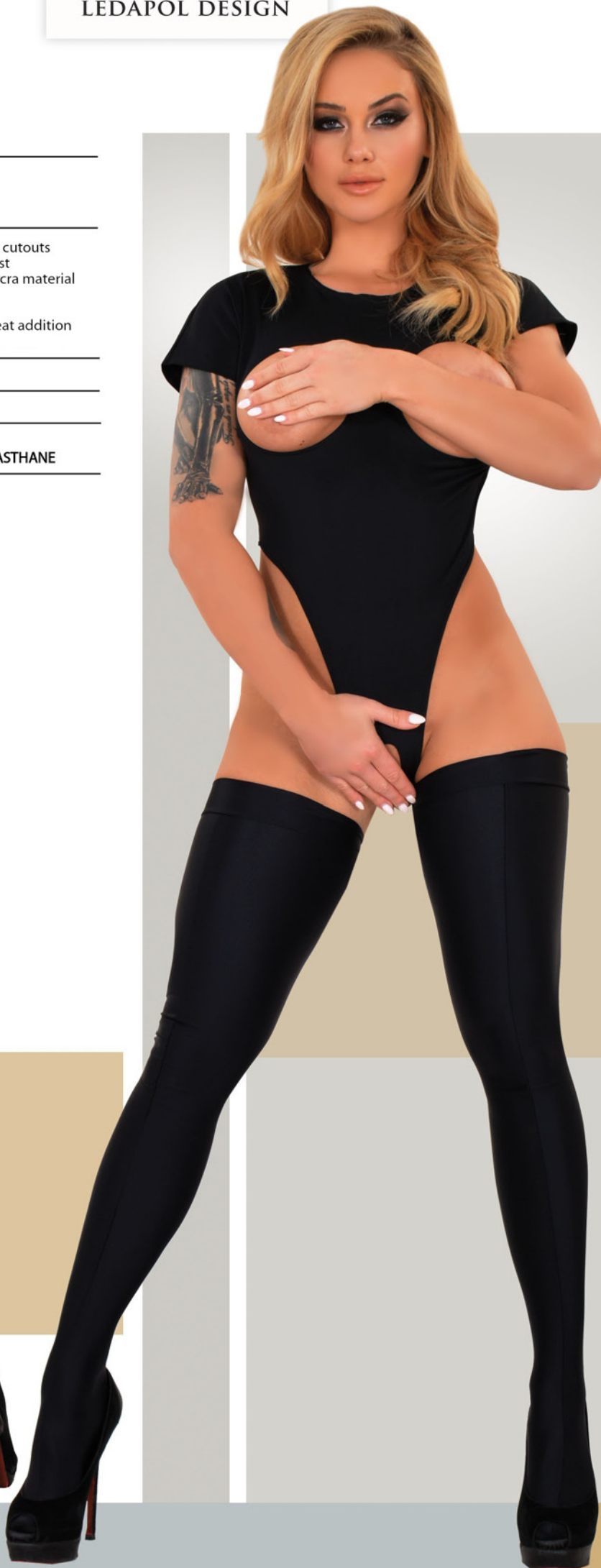
Long stockings made of the same material are a great addition and can also be combined with other products.

PRODUCTS ARE SOLD SEPARATELY

SIZE: S M L XL XXL

Material: LYCRA

MATERIAL COMPOSITION: 80% POLYAMID, 20% ELASTHANE



LYCRA

3109 CATSUIT WITH ZIPPER

This catsuit is built-up. It has a long sleeves, long legs and closed feet, but it also hides a little secret. It is fastened with a zipper that extends along the entire length of the body through the crotch and ends at the back. It can be worn alone or combined with other products from our collection.

SIZE: S M L XL XXL

Material: LYCRA
MATERIAL COMPOSITION: 80% POLYAMID, 20% ELASTHANE



1253 CATSUIT WITH LONG SLEEVES AND LONG LEGS

Material used to produce this catsuit is Lycra. It is very nice in touch and it feels almost like second skin. Its biggest advantage is elasticity thanks to which it fits perfectly to the figure. Although the catsuit is built-up it has black almost invisible zippers on the breasts. It might be a nice surprise for your partner. You can also add some products from our BDSM collection to that.

SIZE: S M L XL XXL

Material: LYCRA

MATERIAL COMPOSITION: 80% POLYAMIDE, 20% ELASTHAN



LYCRA



INSPIRE
YOURSELF



Leather, ecoleather and lack ladies' size table – height 164-176 (cm)

Size	S		M		L		XL		XXL	
	34	36	38	40	42	44	46	48	50	52
Breast (cm)	80 - 83	84 - 87	88 - 91	92 - 95	96 - 99	100 - 103	104 - 107	108 - 111	112 - 115	116 - 118
Under the breast (cm)	63 - 65	66 - 69	70 - 73	74 - 77	78 - 81	82 - 85	86 - 89	90 - 94	95 - 99	100 - 104
Waist (cm)	60 - 62	64 - 66	68 - 70	72 - 74	76 - 78	80 - 82	84 - 86	88 - 90	92 - 94	96 - 98
Hips (cm)	84 - 87	88 - 91	92 - 94	95 - 97	98 - 100	101 - 104	105 - 108	109 - 112	113 - 115	116 - 120

Datex, printed latex and printed datex ladies' size table – height 164-176 (cm)

Size	S	M	L	XL	XXL
Breast (cm)	80 - 87	88 - 95	96 - 103	104 - 111	112 - 118
Under the breast (cm)	63 - 69	70 - 77	78 - 85	86 - 94	95 - 104
Waist (cm)	60 - 67	68 - 75	76 - 83	84 - 91	92 - 98
Hips (cm)	84 - 91	92 - 97	98 - 104	105 - 112	113 - 120



INSPIRE
YOURSELF

35

